



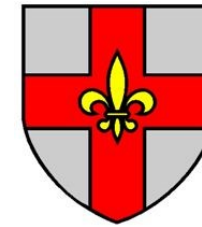
# LINCOLNSHIRE DOES

Lincolnshire Waste Partnership  
Annual Report Summary 2019/20





This is the Annual Report of the Lincolnshire Waste Partnership which consists of these eight councils working together.



CITY OF  
*Lincoln*  
COUNCIL



**North Kesteven**  
DISTRICT COUNCIL



SOUTH  
KESTEVEN  
DISTRICT  
COUNCIL



# OUR VISION: To seek the best environmental option to provide innovative, customer-friendly waste management solutions that give value for money to Lincolnshire

Welcome to the first annual report for the Lincolnshire Waste Partnership (LWP) which explains how we are performing against the objectives we set ourselves in the Lincolnshire waste strategy we approved and adopted in early 2020. Please note that this report covers the period up to March 2020 and thus does not refer in detail to the huge impacts of the COVID-19 pandemic on our services which will be covered in our 2020/21 Annual Report.

Waste and recycling in Lincolnshire is delivered through a number of partners working together. Your waste and recycling is collected by the Waste Collection Authorities – In Lincolnshire these are the City of Lincoln, Borough and District Councils. This waste and recycling is then delivered to the county council, the Waste Disposal Authority, who arrange for its treatment or disposal through a combination of solutions including: reuse where possible; delivery to recyclers and composters; mechanical sorting facilities; energy from waste; and landfill.

In delivering on the objectives we set for ourselves in our Waste Strategy for Lincolnshire, we will be seeking to address key issues including:

- **National policy** — In December 2018 the Government published its new national waste and resources strategy for England.
- **Food waste** — The national strategy proposes weekly food waste collections from 2023, so we need to prepare for this possibility. We have been running a trial for food waste collections in South Kesteven to help us understand the challenges that this change may bring. We are seeking a sustainable and renewable solution which we will be exploring over the next few years.
- **Plastics** — Since the adoption of the Lincolnshire strategy, the world has seen a blaze of interest in plastic waste and how the recycling we collect is handled. Media investigations have challenged waste management practices and raised the profile of accountability and social responsibility.
- **Waste crime** — The Environment Agency has an open invitation to meetings of the LWP and they give us advice and guidance and we support them in waste crime operations in the county. e.g. we support SCRAP, the anti fly tipping campaign, and the days of action where we target illegal waste sites and those transporting waste to them.
- **Recycling quality** — Some of you will now be part of our new separated paper and card collection trial that began last September. Collecting paper and card separately avoids any contact with liquids and food, keeping it clean and dry. This means we can meet the high quality standards of the paper mills who recycle your waste paper and card saving vital natural resources. . The trial has been a great success and we are now planning how we can expand these collections to more areas in Lincolnshire.
- **The wider environment** — e.g. We have to drive many miles to collect and dispose of waste which increases the carbon footprint for our transport operations which is why we have already worked to optimise routes and are investigating how, in the longer term, we can change to different vehicle fuels to reduce our CO2 emissions.

This report looks back over the last year and forward to the next. We expect the Government to provide more detail about the policies they intend to implement and their Environment Bill is progressing through Parliament as the next step towards achieving these. Once this has happened we will know what we have to change and when so the next year will be very exciting for the LWP and I look forward to next year's annual report which will tell you all about it.

Councillor Eddy Poll, Chair of the Lincolnshire Waste Partnership

# WORKING TOGETHER: Our Waste Strategy for Lincolnshire

Between us, the eight councils who make up the Lincolnshire Waste Partnership (LWP) handle some 350,000 tonnes of household waste every year —That's around half a tonne from each and every resident!

We gather all this waste by providing:

- More than 120 refuse trucks collecting from 340,000 homes,
- 11 Household Waste Recycling Centres located around the county, and
- Litter collection, street sweeping and flytip clearance across the county

In order to coordinate our efforts to achieve this effectively, the LWP have developed a shared strategy which each council formally adopted in January 2019.

This strategy sets out what we want to achieve together and how we intend to work towards it to fulfil our vision:

***To seek the best environmental option to provide innovative, customer-friendly waste management solutions that give value for money to Lincolnshire.***

The full strategy can be read online here:

<https://www.lincolnshire.gov.uk/recycling-waste/lincolnshire-waste-partnership>

This annual report refers directly to what we said in that strategy, describing how we are working together to:

- Achieve the strategic objectives which we set ourselves;
- Undertake the actions which we identified; and
- Set ourselves goals to make things even better.



## Waste Strategy for Lincolnshire

Lincolnshire Waste Partnership

Adopted January 2019





We handle around 350,000 tonnes of waste each year, most of which passes through our transfer sites (as pictured here) across the county.









# OPERATIONAL PROJECTS & IMPROVEMENTS: Working better together

Our services start when we receive your household waste, either by collecting it from your home, or receiving it from you at one of our Household Waste Recycling Centres.

As we said in our strategic vision, we are constantly striving to do this in a way which:

- Achieves “the best environmental option”
- Is “customer-friendly”
- Gives “value for money”

## We said we would:

- Improve the quality and therefore commercial value of our recycling stream (objective 1)
- Move towards a common set of recycling materials (objective 2)
- Consider the introduction of separate food waste collections (objective 3)

## So far we have:

- Agreed a list of recyclables to be accepted in collections from every home in the county — meaning that every resident in Lincolnshire is now able to recycle exactly the same things no matter which district they live in
- Run a two-year trial of food waste collections in one area — reducing the amount of contamination in the recycling and using the collected food waste to generate alternative energy.
- Begun a trial of separate collections of paper and card in three separate areas — collecting over

250 tonnes of quality paper and cardboard over the first 6 months of the trial which can be recycled back into paper and card thus conserving valuable natural resources.

- Improved our recycling rate after several years of decline.
- Signed up to the SCRAP anti-flytipping campaign and started delivering actions in response to it.

## Going forwards, we will:

- Look to expand the separate collection of paper and cardboard
- Consider the next steps following the outputs of the Food Waste trial
- Further develop commercial waste services for businesses in Lincolnshire
- Continue to tackle fly tipping and ensure robust enforcement procedures are in place to address those who do not comply



# COMMUNICATIONS, EDUCATION & ENGAGEMENT: Explaining what we do and why

Understanding the wider issues surrounding the environment and sustainability is such an important issue and we are developing effective education, engagement and communications to ensure everyone is well informed and able to play their part.

The Lincolnshire Waste Partnership is passionate about educating others about the importance of recycling for the environment, so we are developing engagement and education activities to inform the community about what happens to their waste and how they can recycle more.

We are beginning to support local educational institutions and community initiatives to provide activities which encourage and educate residents to engage in waste reduction and the importance of recycling and waste management.

## We said we would:

- Support the services we provide by explaining what we do and why
- Seek your views on how best to provide the services you need
- Explore new opportunities of promoting waste minimisation and of using all waste as a resource in accordance with the waste hierarchy (objective 4).

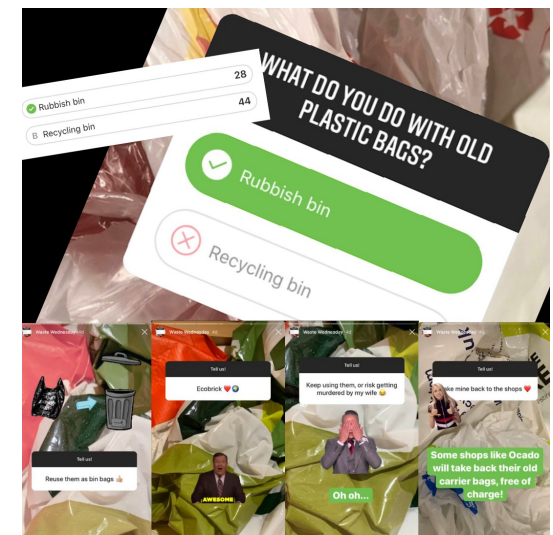
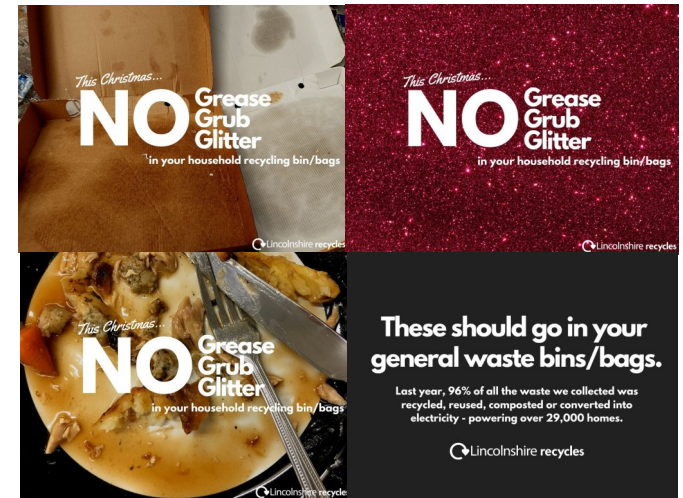
## So far we have:

- Provided simple communications that remind residents what can and cannot be recycled at home
- Updated all of our websites with a comprehensive list of items that are regularly disposed of and provided consistent advice to all residents

- Gathered valuable insight from residents of Lincolnshire to understand your views and opinions about waste and recycling services in Lincolnshire
- Delivered Countywide campaigns which have helped reduce contamination in recycling
- Developed a communications plan to continue to support the residents and the service going forward.

## Going forwards, we will:

- Deliver regular communications campaigns to support the implementation of our LWP strategy
- Communicate and engage with residents to help make recycling simpler and continue to improve the Lincolnshire recycling rate
- Build an engagement programme to work with residents, school children and community groups to help improve the management of waste
- Engage with residents across the county through various focus group activities to explore your views on how best to provide waste services across Lincolnshire
- Provide you with information to help you understand what happens to the waste that we collect from your homes and at the Household Waste Recycling Centres.





# WHERE DOES YOUR HOUSEHOLD WASTE GO?



**CONVERTED INTO  
ELECTRICITY: 53%**



**RECYCLED: 23%**



**COMPOSTED: 21%**



**LANDFILL: 3%**



We have 11 Household Waste Recycling Centres across the county. Between them they received over 68,000 tonnes of your waste last year.



# ASSETS & INFRASTRUCTURE: Ensuring we have the right tools for the job

In order to deliver our Waste Strategy for Lincolnshire and an effective and efficient Waste Service across the county, we are committed to making sure that we have the right assets and the correct infrastructure to do this.

## We said we would:

- Make an objective assessment of what further waste processing/disposal capacity is required and, as necessary, secure appropriate capacity (objective 8), and
- Consider appropriate innovative solutions in the delivery of our waste management services (objective 10) - Looking to use new types of facility where beneficial.

## So far we have:

- Undertaken a review of all assets and infrastructure pertaining to Waste Services in Lincolnshire so that we have a solid baseline of where we are today
- Begun a review of the future developments in the waste sector and are creating plans to ensure we have the right assets and infrastructure across the county to deliver against these developments. This will help us design the facilities that we will need to deliver efficient and effective Waste Services in the future.
- Identified replacement sites for Household Waste Recycling Centres where appropriate, meaning that where current sites are no longer suitable, residents are able to access upgraded facilities to dispose of any waste that we do not collect at the kerbside.

## Going forwards, we will:

- Create an infrastructure that is suitable to deliver all waste services in Lincolnshire
- Manage and select assets and infrastructure solutions in a way that reduces our carbon emissions where possible
- Make improvements to the Household Waste Recycling Centres in the County
- Investigate suitable solutions for managing separate food waste collections in the future
- Ensure that all Waste Transfer Stations have the capacity and flexibility to manage the changes in how we collect waste e.g. are able to store paper and cardboard separately to the rest of the mixed dry recycling.



# PERFORMANCE & GOVERNANCE: Supporting and measuring our work

As a partnership, the LWP is committed to delivering the objectives that it has set in an effective and efficient way. We not only ensure that as a partnership we are working together effectively, we also deliver the results that show the progress we are making.

## We said we would:

- Contribute to the UK recycling targets of 50% by 2020 and 55% by 2025 (objective 5),
- Find the most appropriate ways to measure our environmental performance, and set appropriate targets (objective 6)
- Seek to reduce our carbon footprint (objective 7)
- Regularly review the LWP governance model (objective 9).

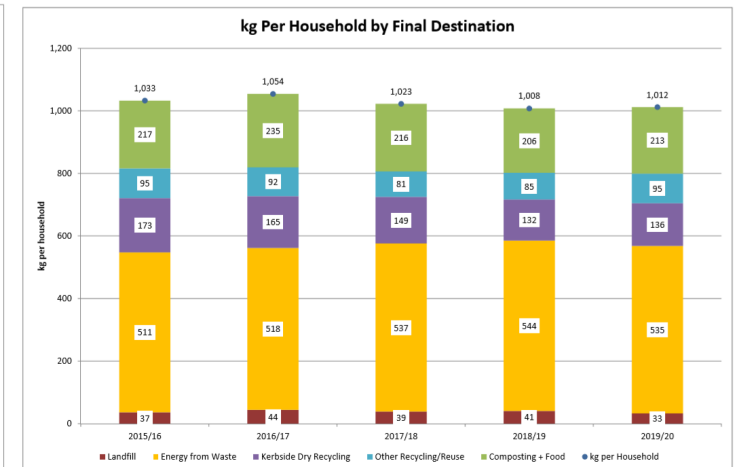
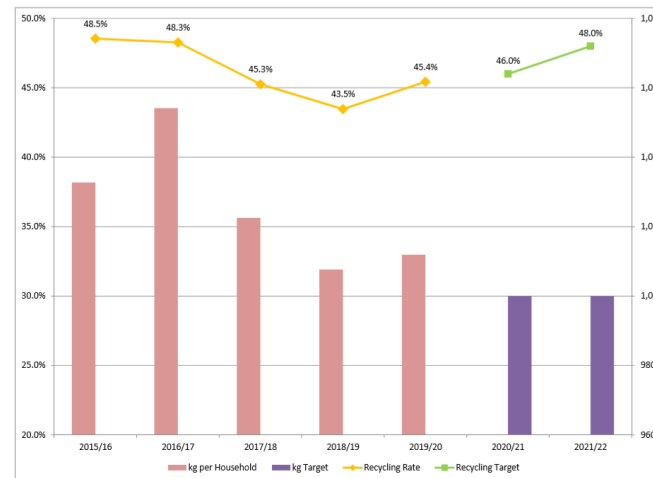
## Going forwards, we will:

- Continue to measure our performance and use this information to develop our services
- Use data to make informed decisions about the services we provide
- Ensure that our working practices are reviewed annually so that we continue to provide you with the best possible waste services
- Work together as a partnership to effectively deliver Waste Services in Lincolnshire
- Continue to be open and transparent



## So far we have:

- Developed a suite of measures to help us to monitor the improvements we are making
- Agreed a set of terms of reference for the main LWP and for each of our working groups which are to be reviewed annually
- Met as a full partnership 3 times in open meetings which have been minuted and the outputs published





# The Figures So Far...

## Waste Processed:

1 0 0 0 0 0 0

Tonnes

Every waste collection is an opportunity to reclaim valuable resources and improve the environment we all share. The latest recycling and green energy technology is used to ensure we recover as much resource as possible and minimise the use of landfill.

## Air Pollution Control Residue (APCR) removed:

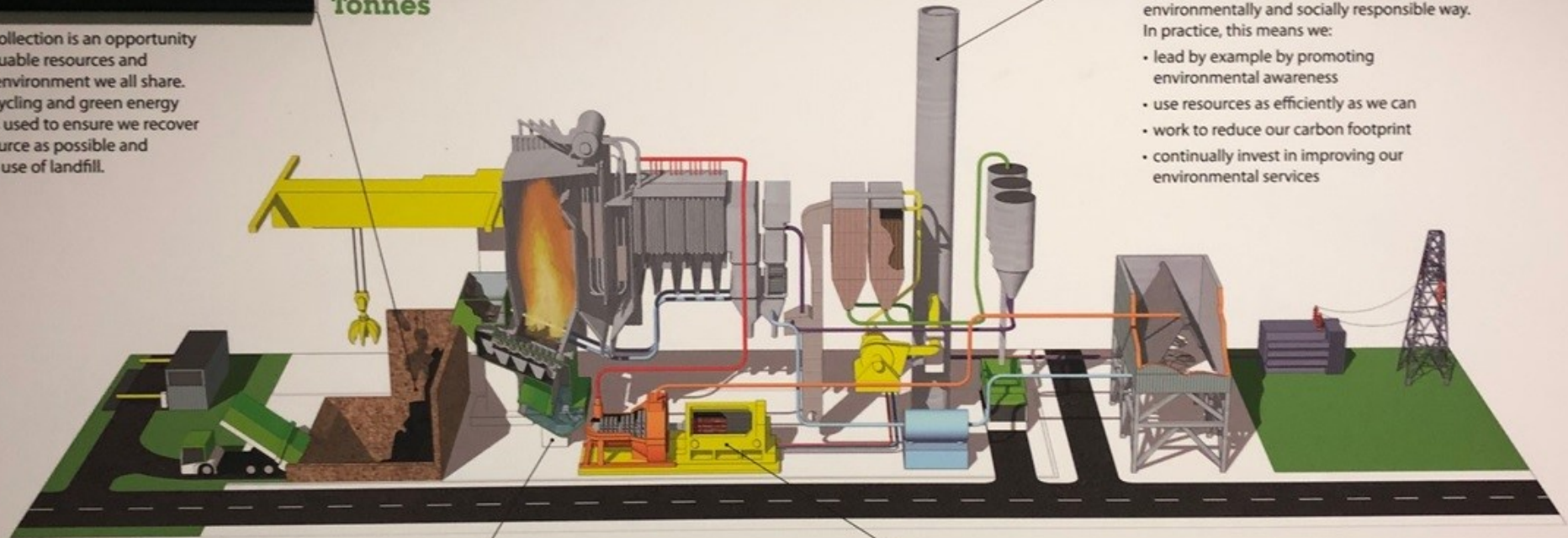
2 2 2 5 5

Tonnes

Because we care about what we do and how we do it, you can be confident our operations are run in an environmentally and socially responsible way.

In practice, this means we:

- lead by example by promoting environmental awareness
- use resources as efficiently as we can
- work to reduce our carbon footprint
- continually invest in improving our environmental services



## Bottom Ash and Metal Recovery:

2 1 8 3 9 1

Tonnes

Bottom Ash is processed into aggregate for use in construction projects all over the UK. Metals are sent to recycling to make other products.

## Electricity Generation:

4 7 4 6 2 9

Megawatt hours

Our aim is to recycle as much as we can, but extracting value – in the form of energy – from the waste we can't recycle is an equally important part of our approach.



In September 2019 we processed the one millionth tonne through our Energy from Waste facility

# WHAT HAPPENS NEXT?

Having worked together to develop a shared strategy, we will not rest on our laurels. The eight councils of the Lincolnshire Waste Partnership are committed to work together by:

- **Implementing the objectives set out in our Strategy** — This Annual Report sets out how we aim to do that through improved services, clear communications, providing infrastructure, and behind the scenes support.
- **Measuring and reporting on how we're doing** — Through the Annual Report and at public meetings of the Lincolnshire Waste Partnership.
- **Helping to shape national policy** — We responded to the first round of consultations on policy outcomes from the 2018 Resources and Waste Strategy for England, and we will continue to let government know what we think through further consultations due later in 2020 and through other means.
- **Responding to any changes in national policy** — As the UK government firms up its resources and waste policies, we will continue to adapt to provide the best possible services for Lincolnshire which align with the national picture.
- **Reviewing and, if necessary, updating our Waste Strategy for Lincolnshire** — Each Annual Report allows us to take stock both of how well we're enacting our current strategy and will help us to identify when a new strategy is needed.
- **Tying in our waste-related work with other environmental issues** — Protecting and enhancing the environment is an important issue in Lincolnshire, nationally and globally. What we do about waste will make an important contribution to the impact we have.
- **Responding to any other emerging issues** — Some events arrive out of the blue. For example, our response to COVID-19, the impact of which was only just beginning to be felt at the end of the period covered by this Annual Report (March 2020) will be covered in next year's report.

Responding to national consultations like this one:



HM Revenue & Customs

Plastic Packaging Tax

Consultation Document

Protecting and enhancing the environment::








HM Government



# OUR WASTE, OUR RESOURCES: A STRATEGY FOR ENGLAND



If you want to know more about the Lincolnshire Waste Partnership and our work:

- ◆ See the LWP webpage — <https://www.lincolnshire.gov.uk/recycling-waste/lincolnshire-waste-partnership>
- ◆ Email — [Lincolnshirewastepartnership@lincolnshire.gov.uk](mailto:Lincolnshirewastepartnership@lincolnshire.gov.uk)